



Alarm Management in TRBOnet 5.1

*A comprehensive toolset
for abnormal situation awareness
and automated response actions*

Introducing TRBOnet Alarm Management

What you will learn:

- Overview: what it is, what it does, what its strengths are
- Key concepts and principles of operation
 - Event types and sources
 - Alarm-triggering conditions
 - Automated response actions
- Proven in production: a case study
- Configuration UI walkthrough

Alarm Management Overview

- Optional, separately licensed TRBOnet module
- **Abnormal Situation Management (ASM)** for MOTOTRBO and beyond:
alarm setup, activation, shelving,
flood suppression, dynamic conditional
routing / escalation / annunciation,
response actions and logging
- **Scalable and adaptable:** unlimited
upstream listeners, source-specific
trigger options and multiple
downstream outputs

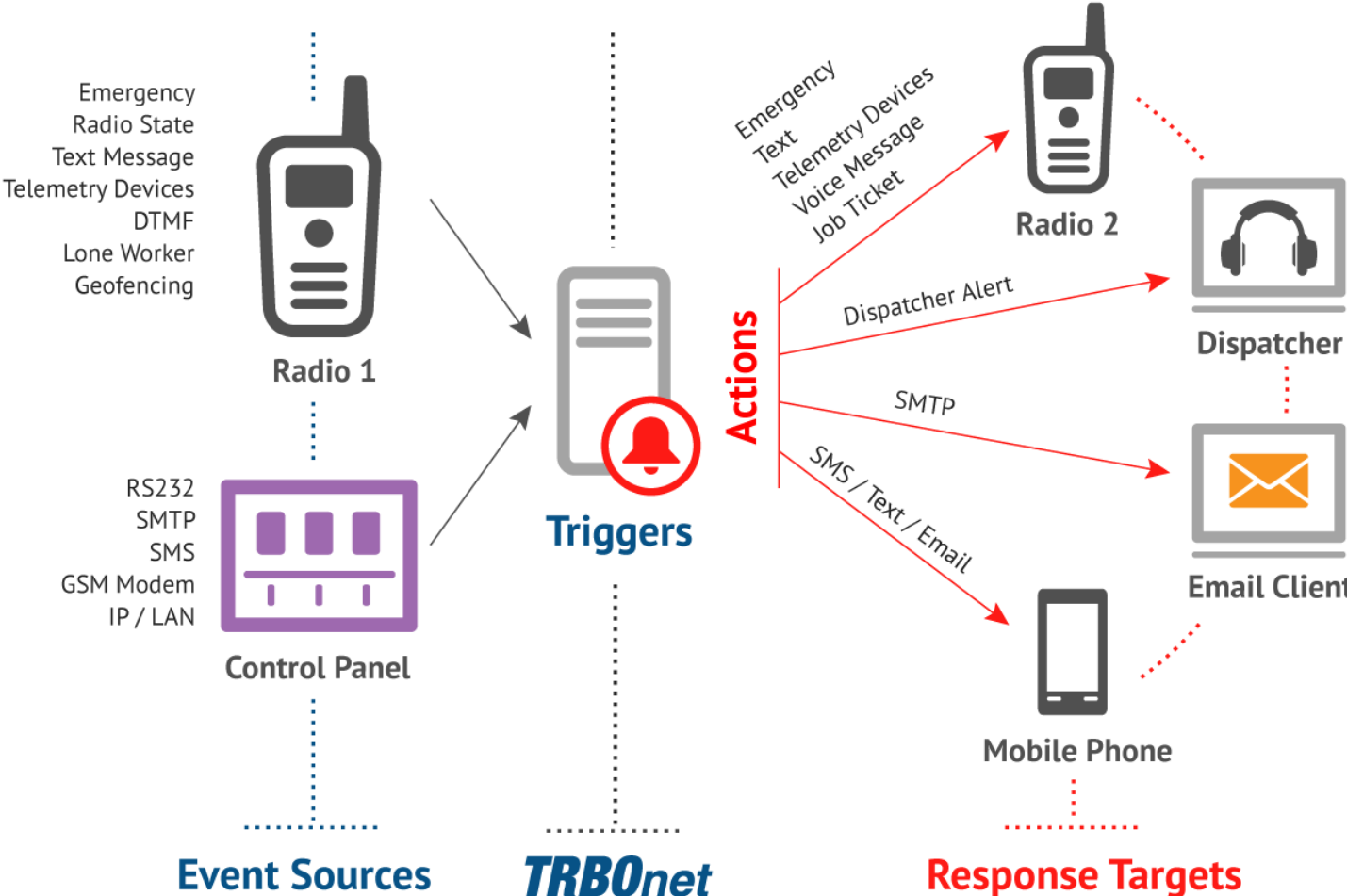


TRBOnet

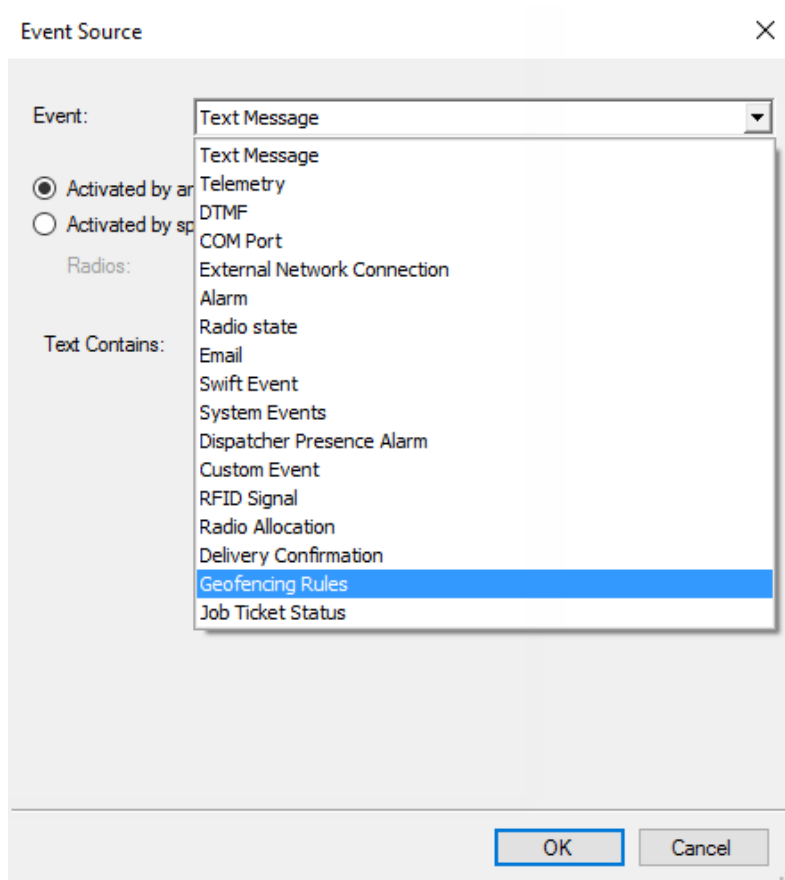
Three-Step Alarm Setup

1. Select event types and event sources to track
2. Define trigger conditions
3. Configure response actions

General Integration Diagram



Extensive Choice of Event Sources



Alarm Control Panel LAN Connection

- TCP/IP connection to TRBOnet Server or Dispatch Console
- RS232 via Moxa NPort
- Email

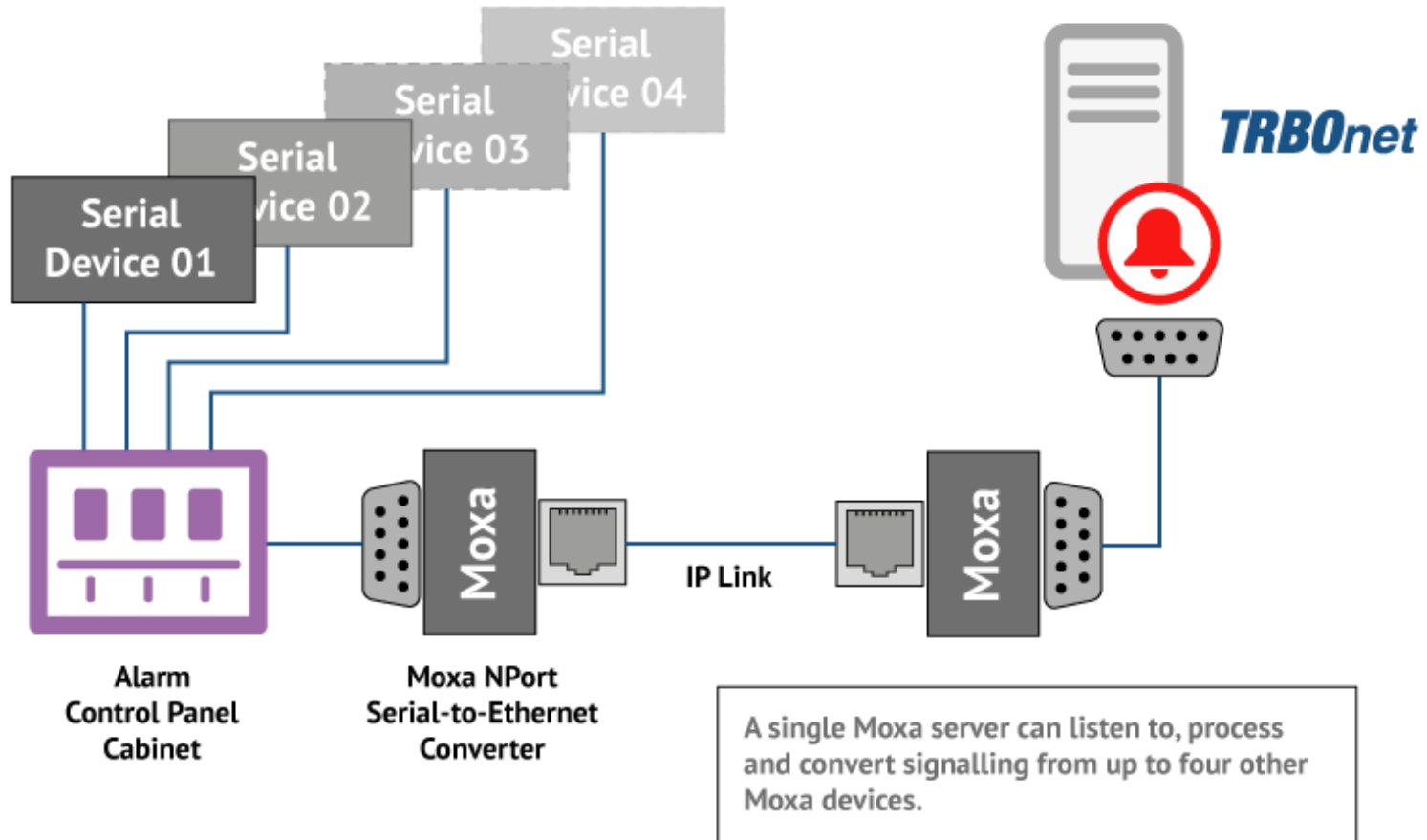
MOTOTRBO Data Connection

- Text with a matching pattern
- Telemetry signal
- Predefined DTMF sequence
- ARS (Status change: on/off)

Native MOTOTRBO Alarms

- Emergency Call
- Emergency Alarm
- Man Down
- Lone Worker Alarms
- Geofencing Alarms

Signal Path from Multiple Serial Devices



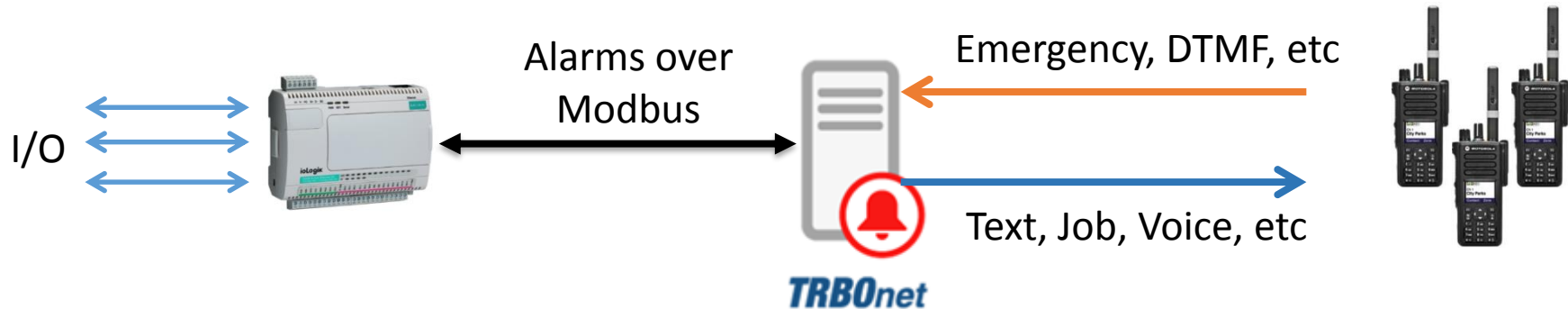
RS232 to TCP/IP convertor

Modbus

TRBOnet fully supports Modbus protocol. TRBOnet Server can work as Modbus Master or Slave.

READ: Alarm from Modbus device (RTU) can initiate an action (e.g., voice/text message to radios)

WRITE: in case of radio alarm TRBOnet sends command to Modbus device (RTU)

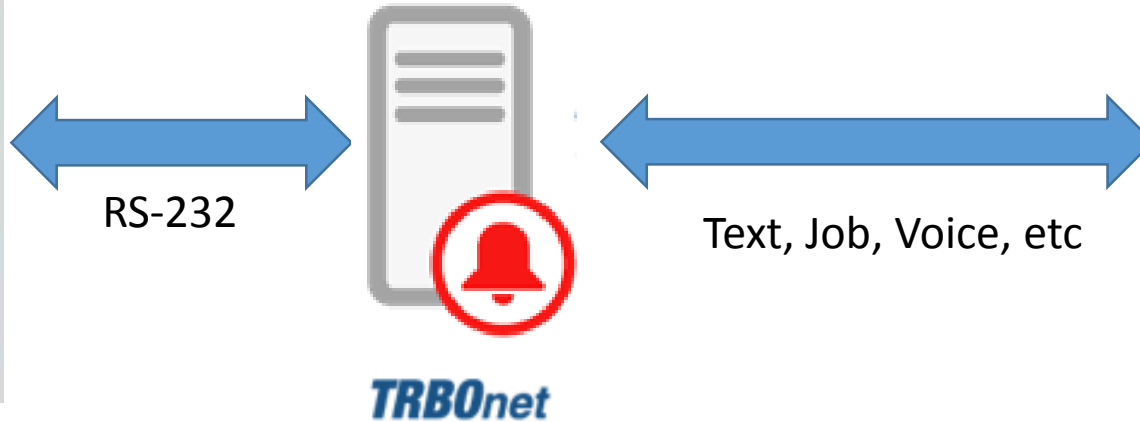


Support for ESPA 4.4.4



ESPA Control Station

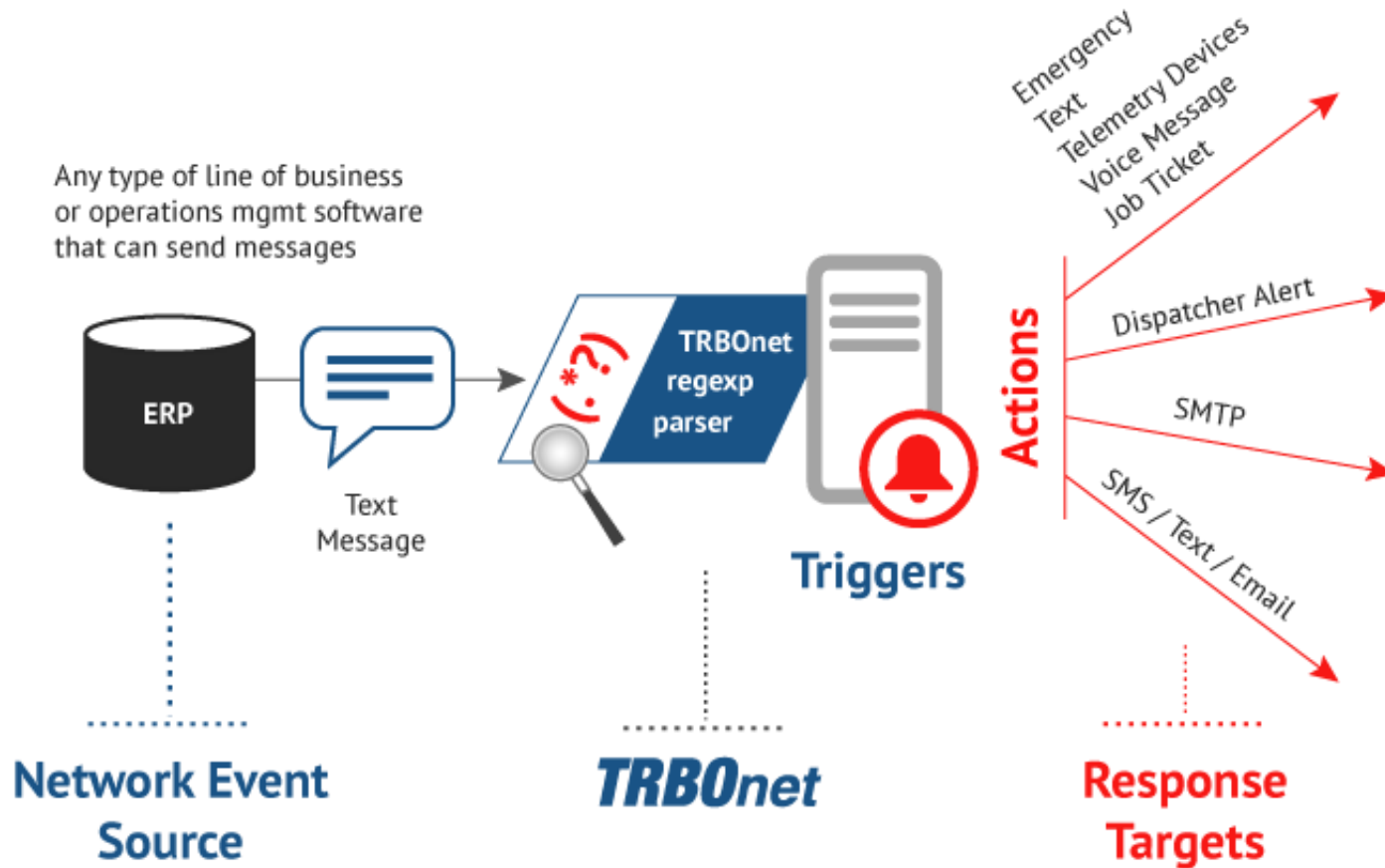
Type: **fire**; floor: 3, room 225; datetime



Interfacing with IP Network Sources

- Easily integrate with any enterprise operations management system, BMS, ERP or line of business software capable of sending/forwarding text messages over a TCP/IP connection
- TRBOnet parses the messages for configurable regular expressions (text patterns) and triggers the rules as necessary

IP Network Text Event Integration



Multiple Alarm/Alert Target Outputs

MOTOTRBO Radio

- Text Message
- Job Ticket
- Voice Call
- Remote Mic Monitor
- Radio Kill

GSM Mobile Phone

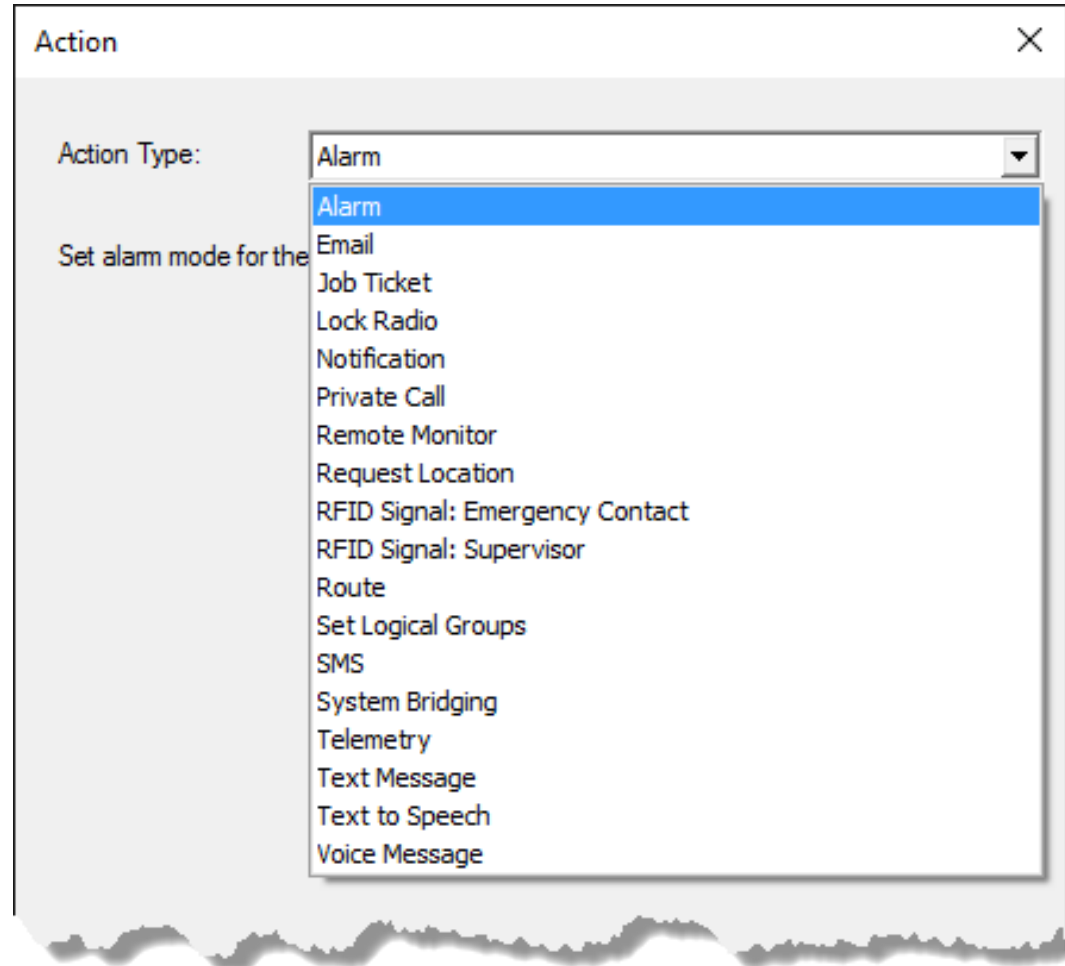
- SMS

SMTP Server

- Email message

Regular Phone

- Phone Call



Alarms and Job Tickets: Integrated for Responsive Customer Care



CASE STUDY
SUN INTERNATIONAL PLACES ITS BETS ON MOTOTRBO



SUN INTERNATIONAL PLACES ITS BETS ON MOTOTRBO™

DIGITAL RADIO WITH TRBONET JOB TICKETING APP AUTOMATES GLOBAL GAMING OPERATIONS



The Sun International Group has a diverse portfolio of assets including world class five star hotels, modern and well located casinos, and some of the world's premier resorts. Its destinations offer experiential luxury, enduring quality and adventure, supported by an authentic dedication to personal service.

Dedication to personal service underpins Sun International's competitive edge and the group has strengthened its leadership in gaming, following the migration to a MOTOTRBO digital radio system with a custom-designed TRBOnet automated

CUSTOMER PROFILE
Company
Sun International

Partners
Danimex South Africa
(Motorola Distributor)
Olympic Communications
(Reseller Partner)
Neocom Software Limited
(Application Developer)

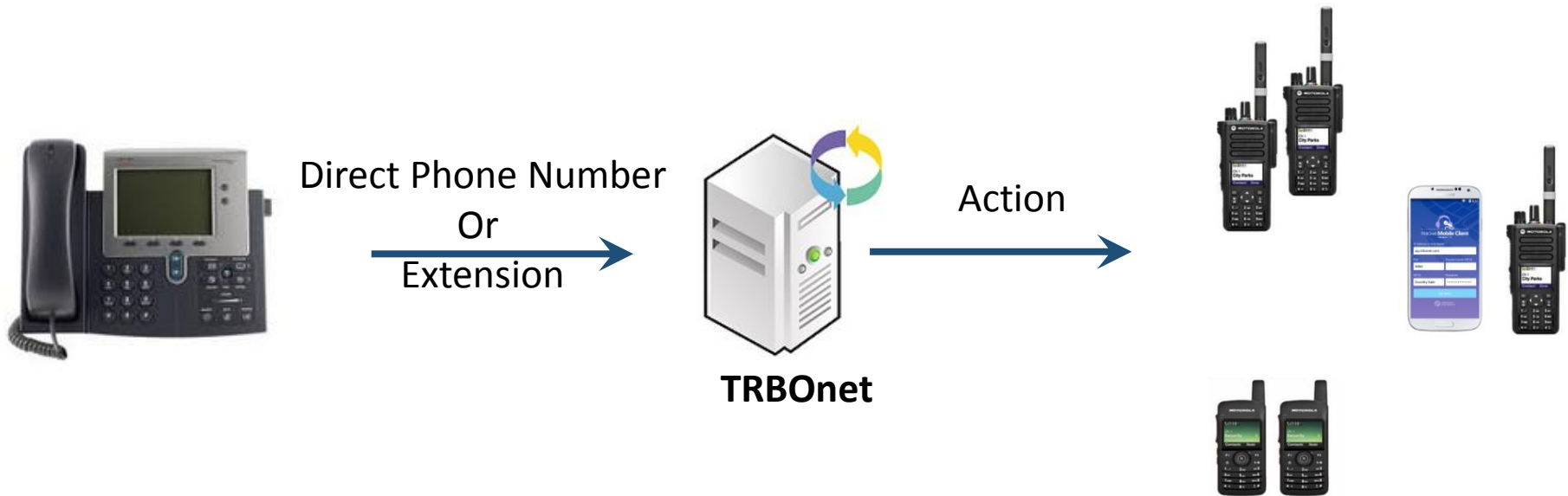
TRBOnet
Smarter Radio Networks

SOLUTION
SHOWCASE



Paging

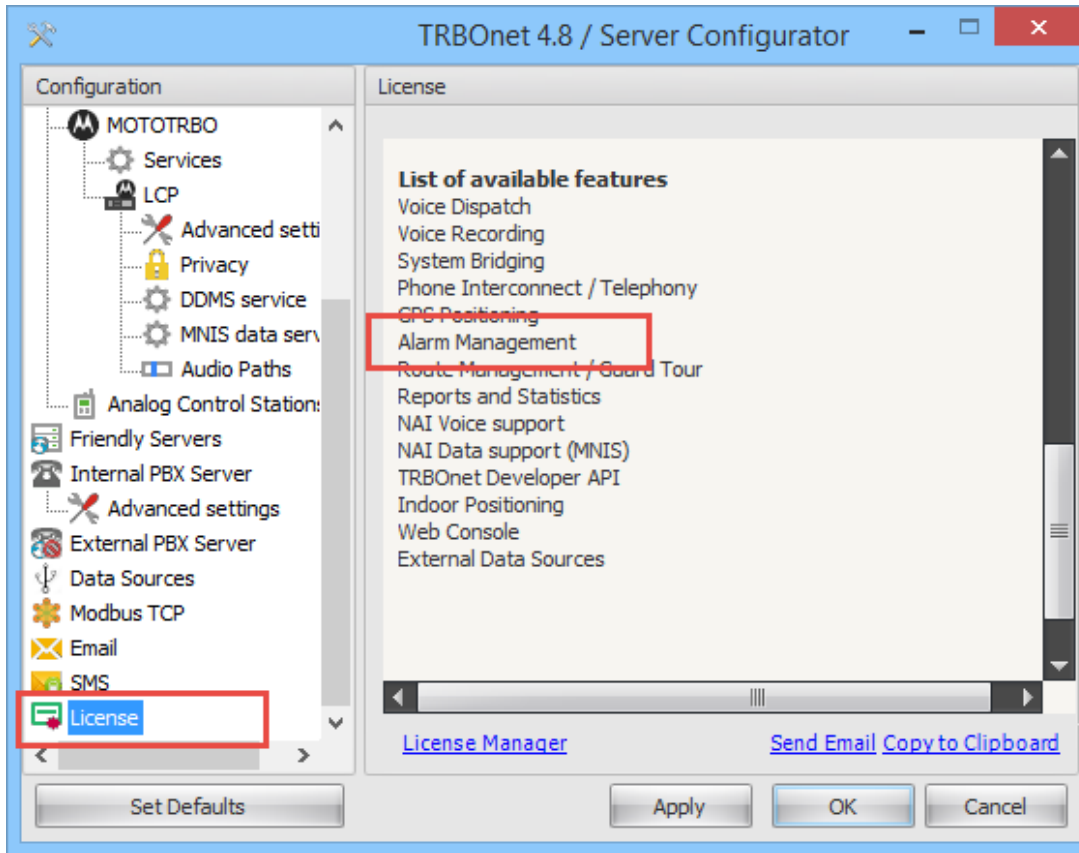
- Based on Telephony and Alarm/Event Management modules



Configuration UI Walkthrough

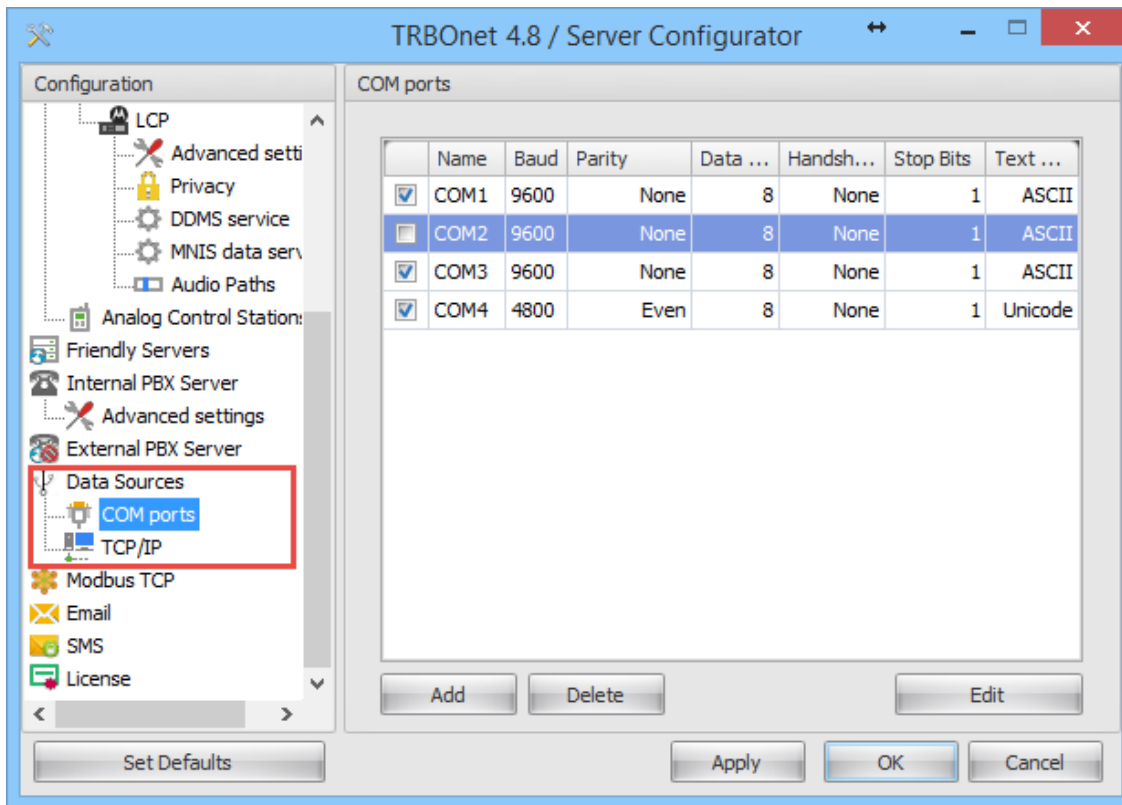
License Check

Make sure your installed license includes Alarm Management



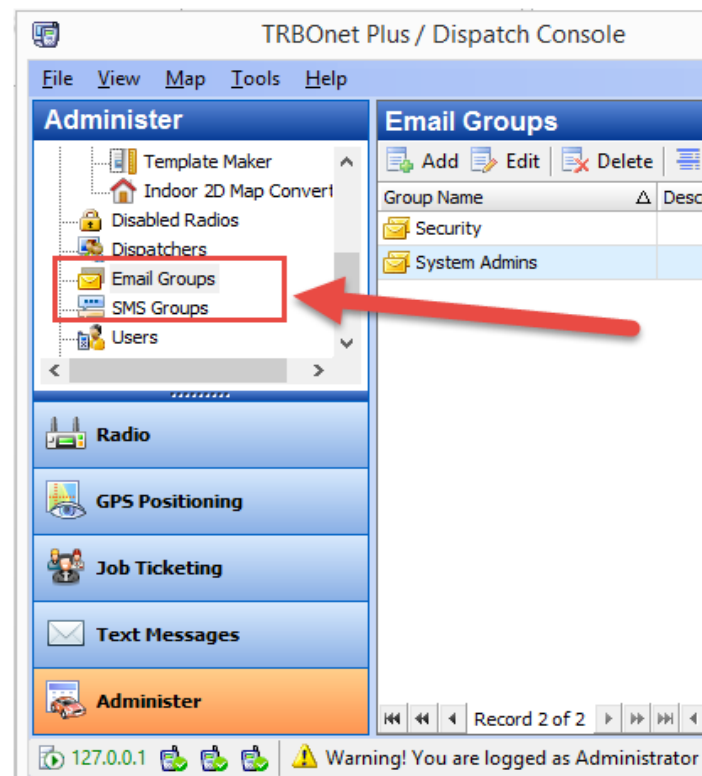
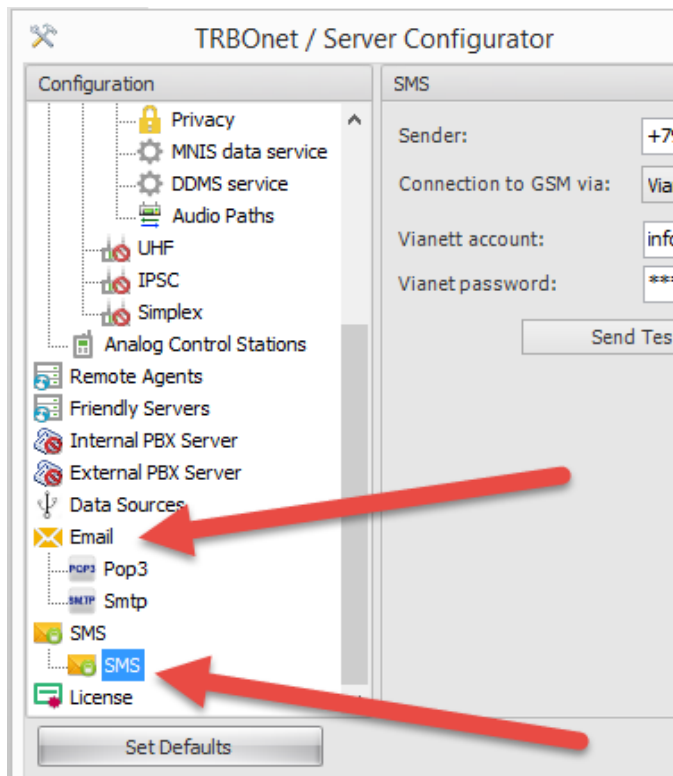
Assign COM Ports to Serial Devices

Configure RS232 inputs in TRBOnet Server to listen to field telemetry devices



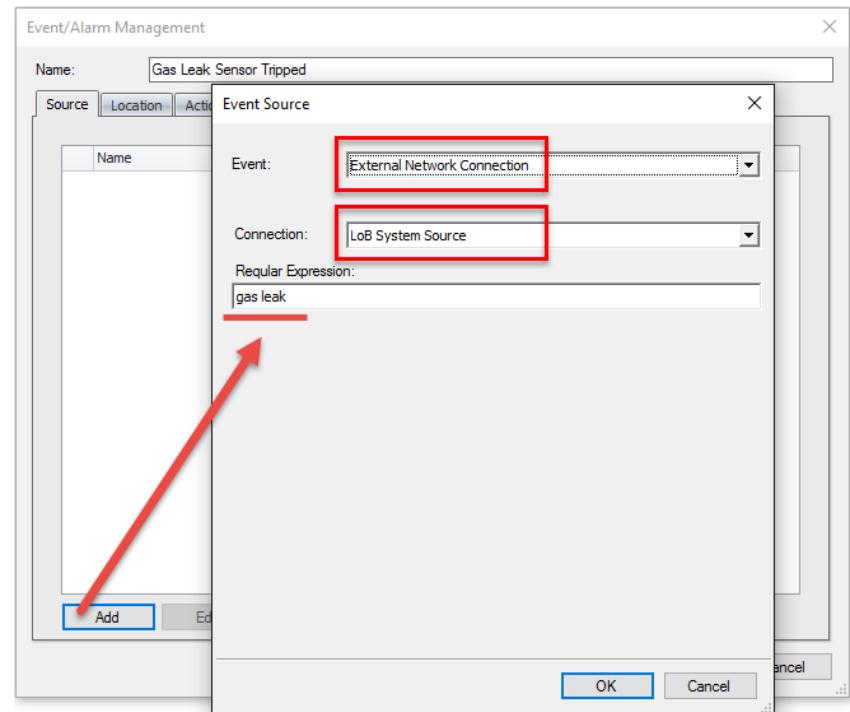
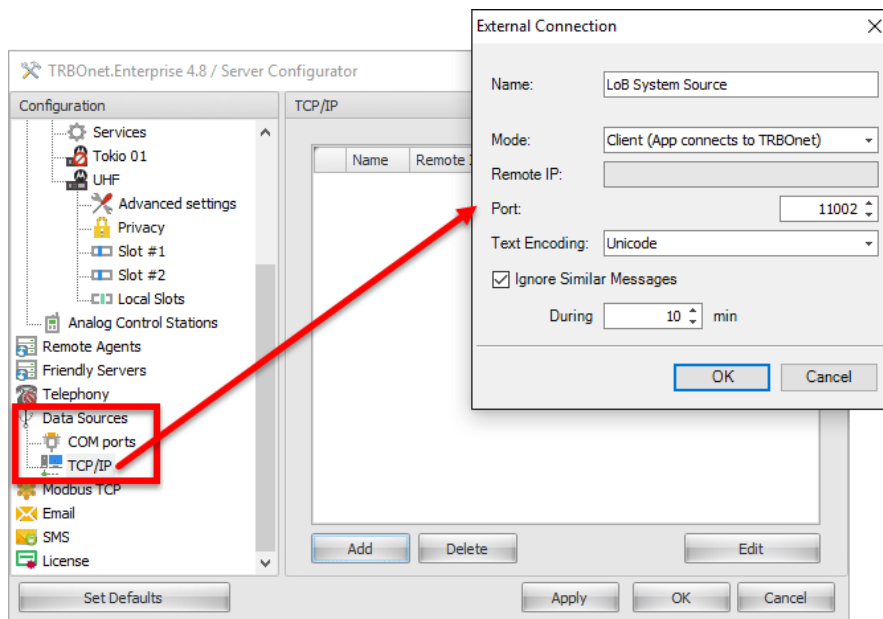
Set up SMTP/POP3 and SMS Transport

- Gateways in Server
- Profiles in Dispatch Console

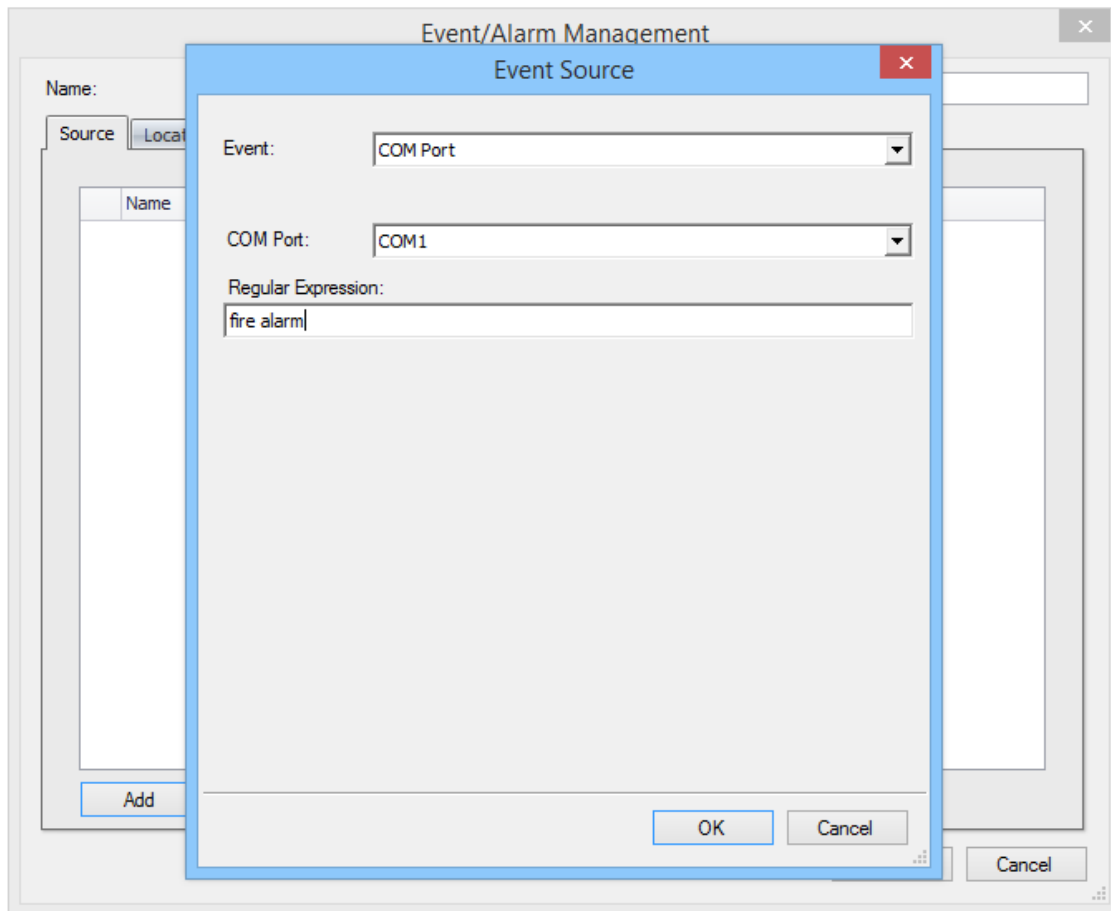


Set up TCP/IP Text Source Transport

- Gateways in Server
- Rules in Dispatch Console



Define Alarm Rules



Define Response Actions

Event/Alarm Management

Name: Fire Alarm from Control Panel

Source Location Action

Text to Speech
Job Ticket

Action

Action Type: Text to Speech

Call Type	Channel	Call Target
Group Call	Western Tower Slot 1	Fire
Group Call	Western Tower Slot 2	Security
Phone Call	Phone Interconnect	911

+ Add - Remove

Impolite Channel Access

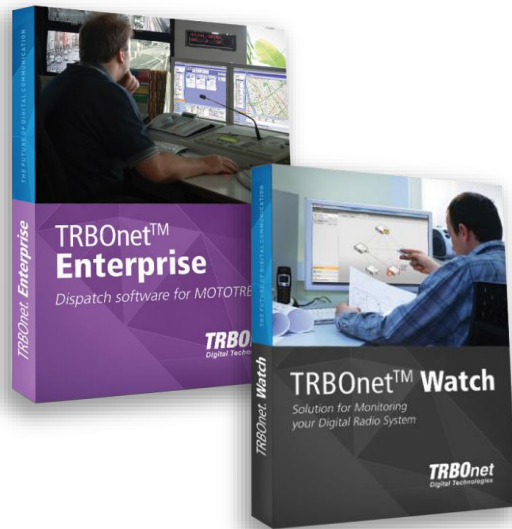
Text: Attention! Attention! Fire Alarm in the building! Check the floor number 5.

Variables: [Radio ID](#) [Radio Name](#) [Radio State\(on/off\)](#) [Beacon Name](#)
[Alarm](#) [Street Name](#) [Map Link](#) [Region](#) [Incoming Text Data](#)

Add Edit

OK Cancel

TRBOnet is Your One Stop Shop!



TRBOnet Enterprise/PLUS: Voice Dispatch & AVL

- Award-winning control room with emergency and call centre
- AVL tracking with geofencing control
- Reports and incident tracking

TRBOnet Watch: Radio Network Management

- Radio network troubleshooting
- Load analysis and capacity planning
- Real-time health monitoring

GOB Solutions



- Man Down, Crash Detect, No Movement
- GPS tracking
- Extended telemetry

TRBOnet Hardware



- **DT500** Telemetry Event Preprocessor
- **Agent** Radio-to-IP gateway
- Foot pedals, mic connectors, cables



TRBOnet
Smarter Radio Networks



Q & A



www.TRBO.net.com

